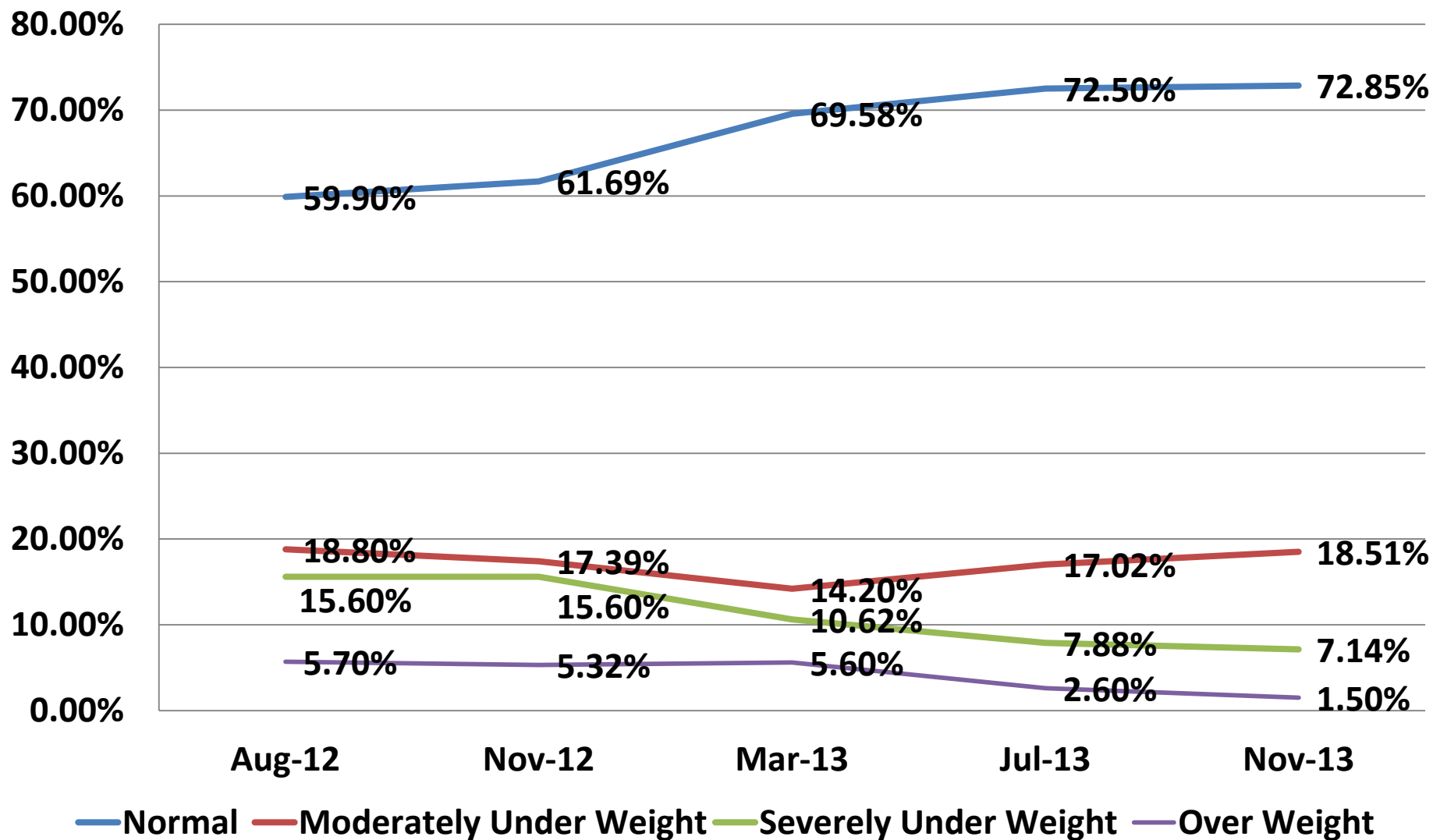


Details of children – Shikaripura Block

Month	Normal (%)		Moderately Under Weight (%)		Severely Under Weight (%)		Over Weight (%)		Total 6 To 36 Months Children
Aug-12	2307	59.90%	723	18.80%	600	15.60%	220	5.70%	3851
Nov-12	2376	61.69%	670	17.39%	600	15.60%	205	5.32%	3851
Mar-13	2297	69.58%	469	14.20%	350	10.62%	185	5.60%	3303
July-13	2045	72.50%	480	17.02%	222	7.88%	73	2.60%	2821
Nov-13	3101	72.85	788	18.51%	304	7.14%	64	1.50%	4257

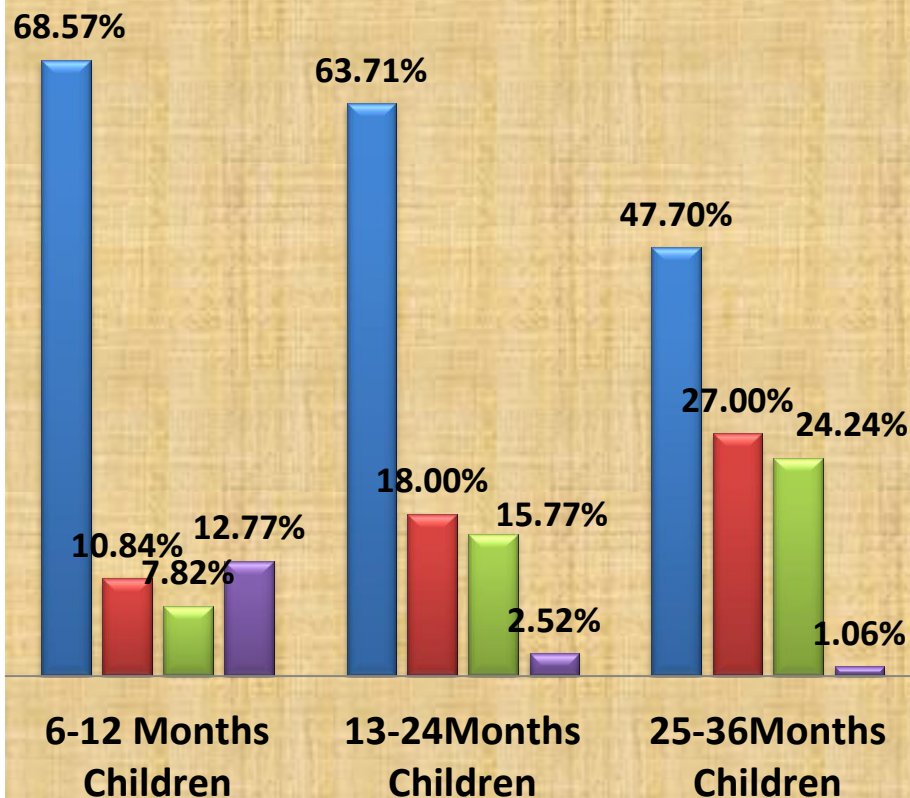
Improvement in Nutritional Status of 6 to 36 months children in Shikaripura Block



Nutritional Status of 6-36 months children of Shikaripura Block

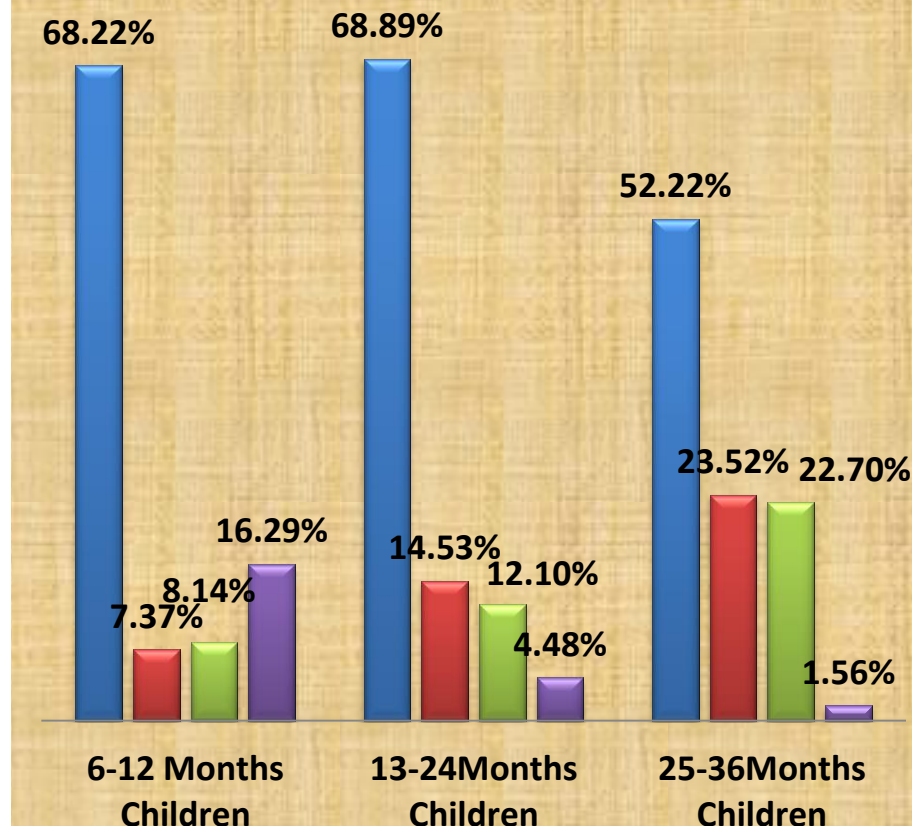
As on August, 2012
(Total No. of Children - 3851)

■ Normal ■ Moderate ■ Severe ■ Over Weight



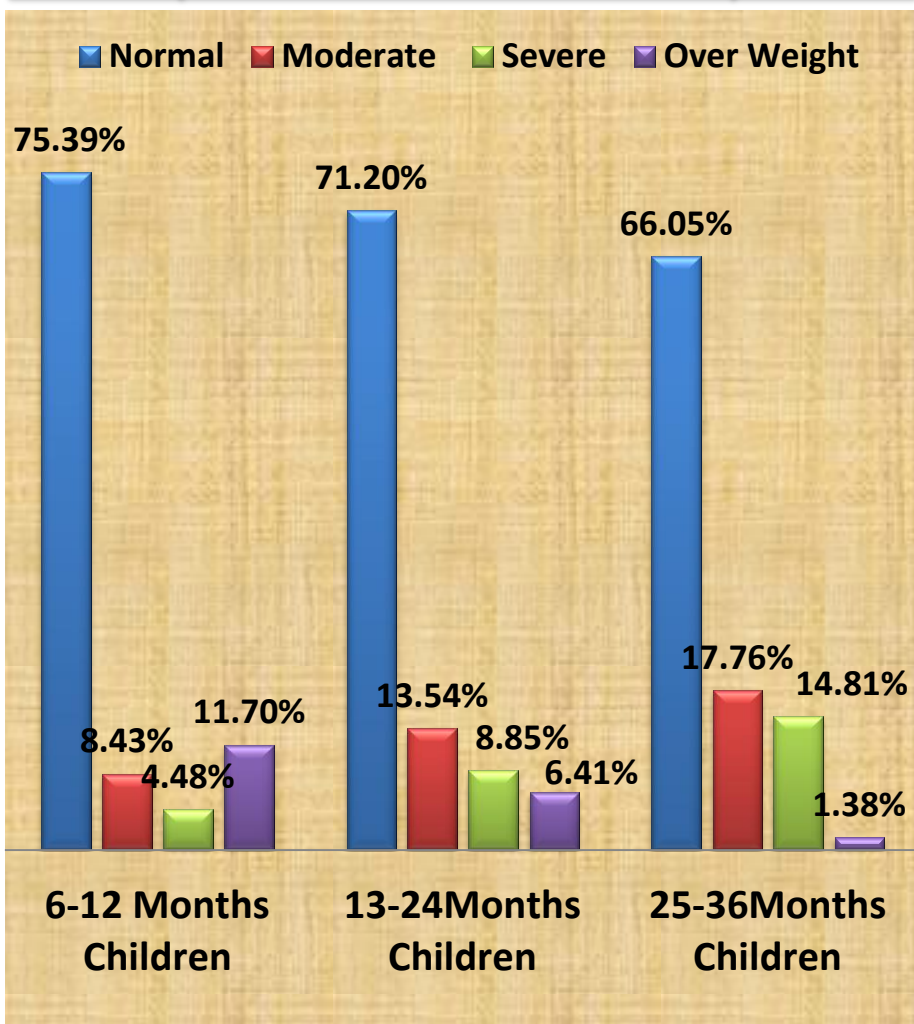
As on November, 2012
(Total No. of Children - 3851)

■ Normal ■ Moderate ■ Severe ■ Over Weight

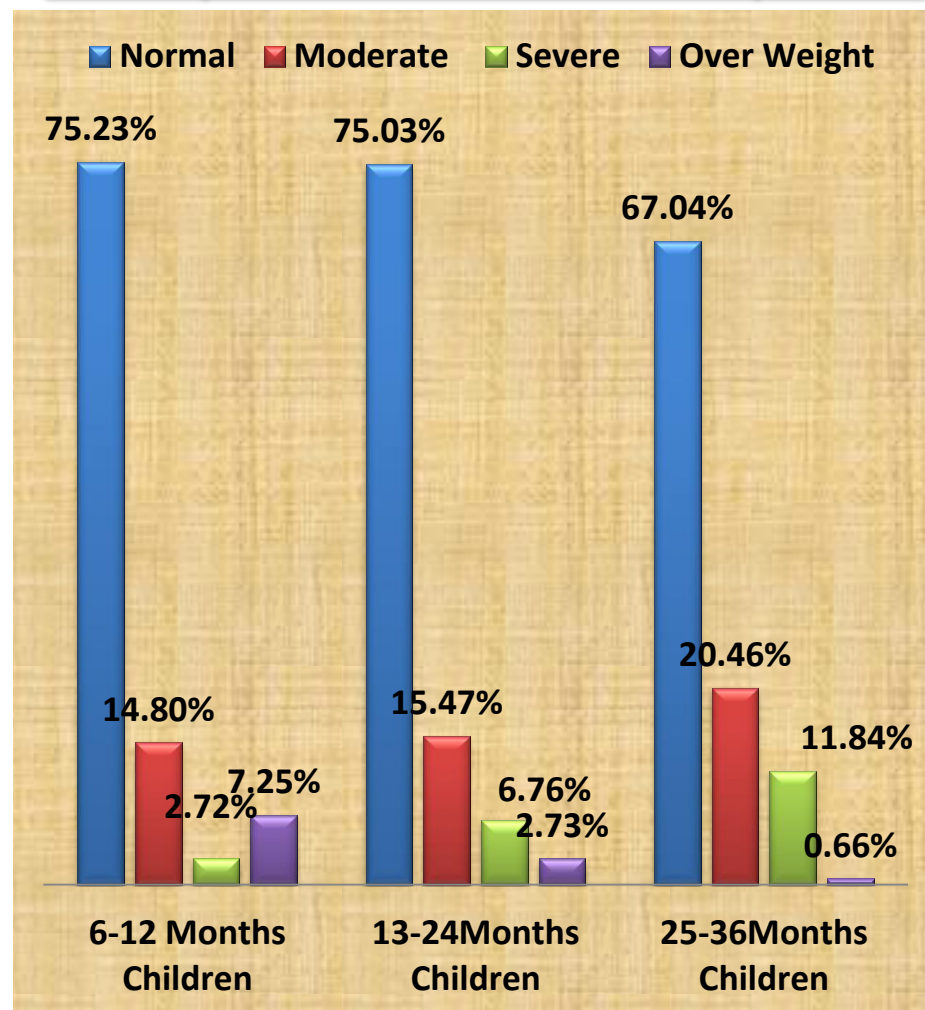


Nutritional Status of 6-36 months children of Shikaripura Block

As on March, 2013
(Total No. of Children - 3303)



As on July, 2013
(Total No. of Children - 2821)



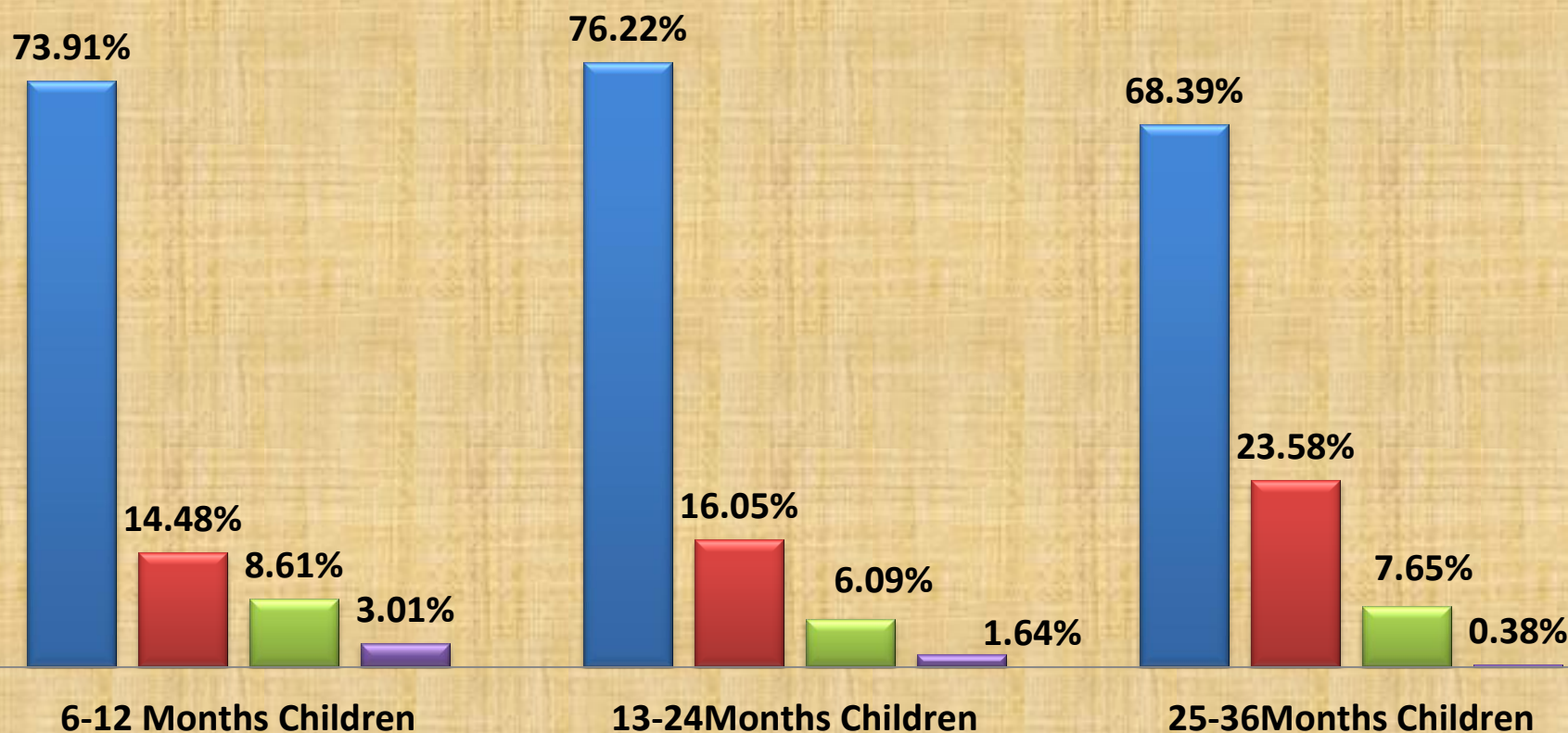
Nutritional Status of 6-36 months children of Shikaripura Block

As on November 2013

(Total No. of Children – 4657)

(newly registered no. of children – 1994 [from July, 2013 to November, 2013])

■ Normal ■ Moderate ■ Severe ■ Over Weight

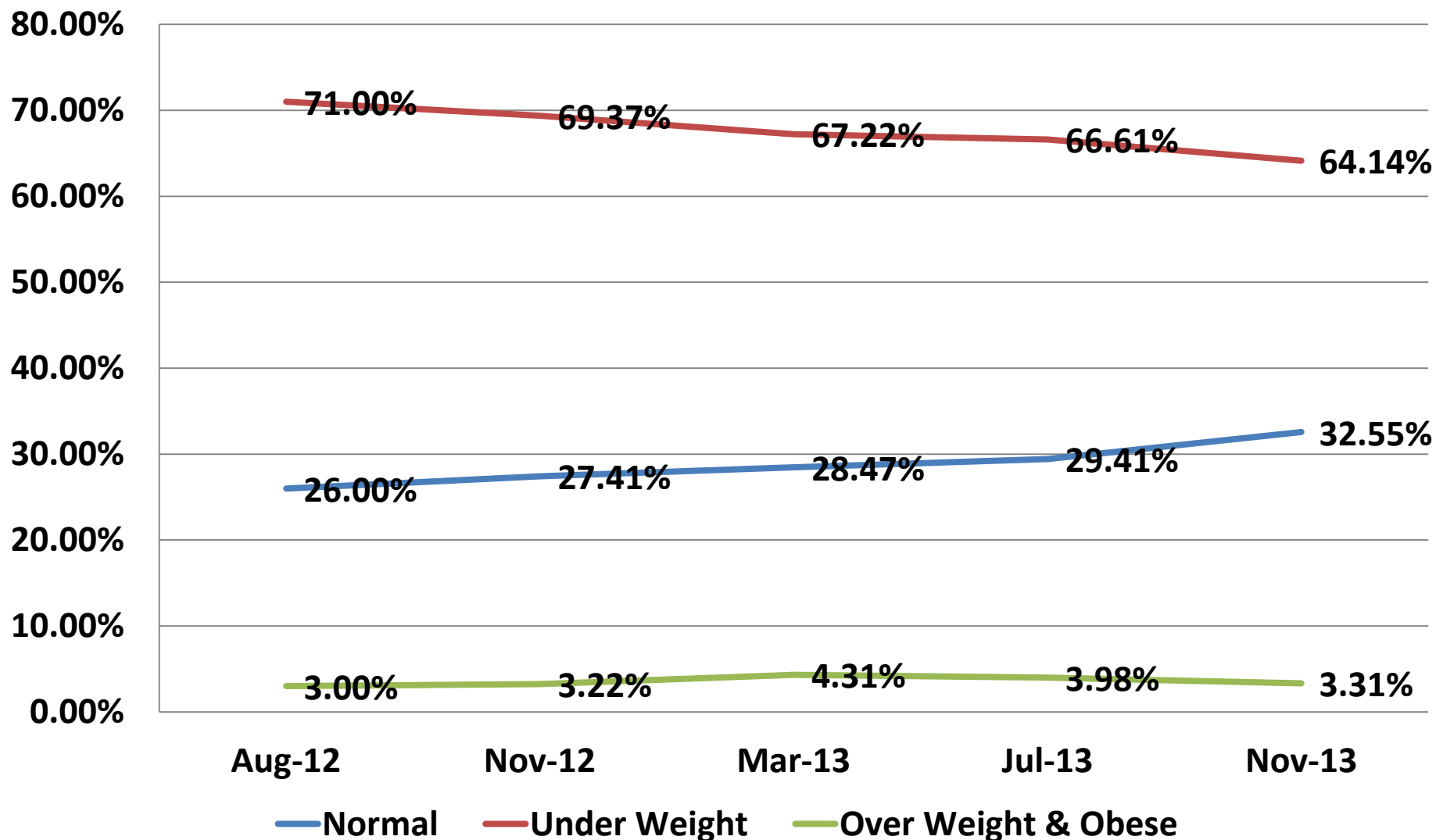


Details of the BMI of Adolescent Girls

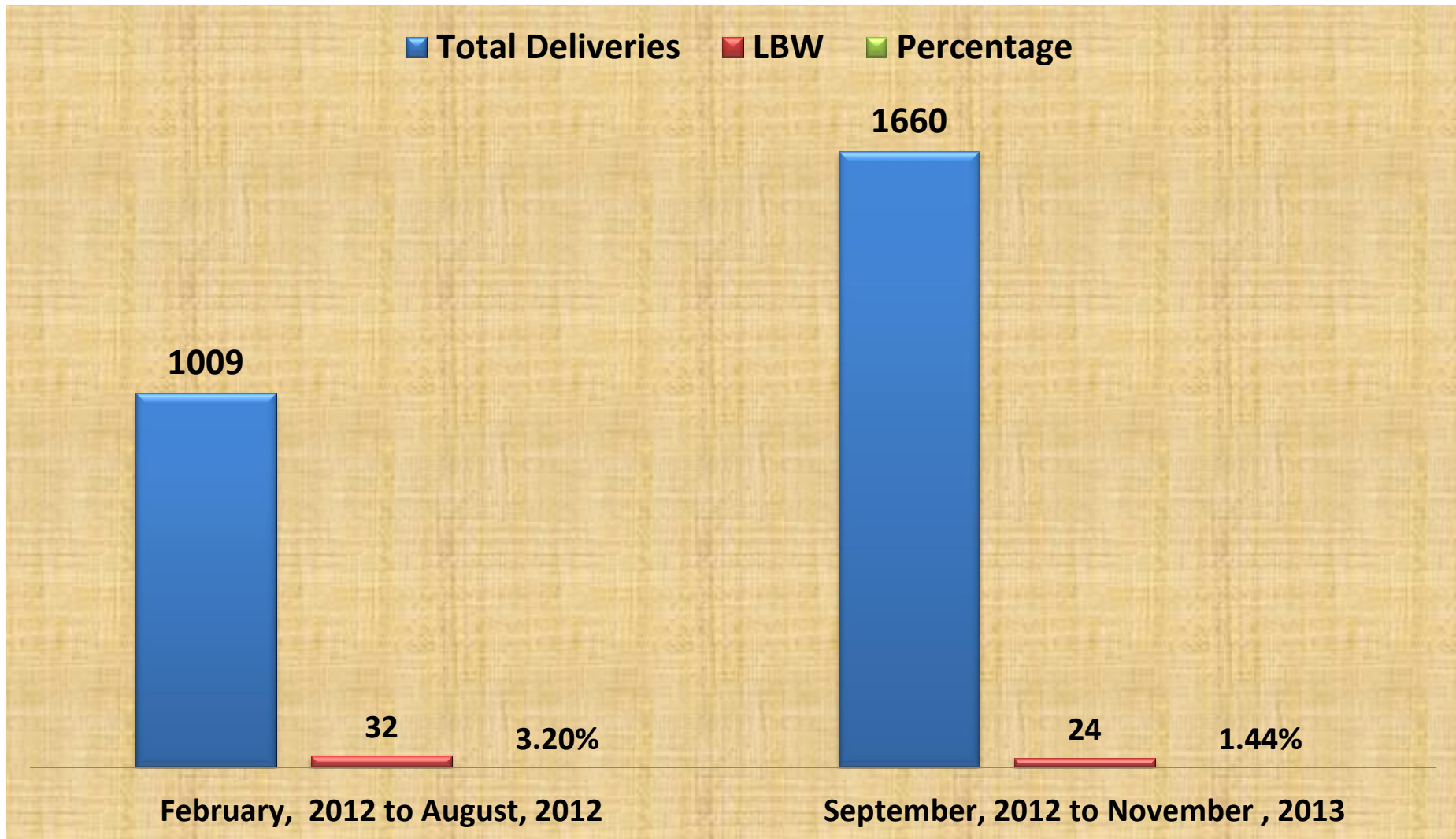
Shikaripura Block

Month	Normal		Under Weight		Over Weight & Obese		Total Adolescent Girls
Aug-12	1026	26.00%	2800	71.00%	118	3.00%	3944
Nov-12	1081	27.41%	2736	69.37%	127	3.22%	3944
Mar-13	1117	28.47%	2637	67.22%	169	4.31%	3923
July-13	1144	29.41%	2591	66.61%	155	3.98%	3890
Nov-13	1674	32.55%	3299	64.14%	170	3.31%	5143

Improvement in BMI Status of Adolescent Girls in Shikaripura Block



Reduction in Low Birth Weight Shikaripura Block



Details of Sanitation-Shikaripura Block

(As on April, 2014)

Total no. of Villages covered	Total no. of families covered by the project	No. of families without toilets	No. of families applied to Panchayat for toilet construction through Project	Applications Approved	Toilets Constructed and in use	Application under process
156	11111	1430	1430	670	575	760